

Figure S1. Sequencing results of colony PCR of cDNA from F₁ transgene-positive piglets. (A) A representative electropherogram for the introduced 746G allele that was found in brain, cerebellum, liver, lung, spleen, small intestine, skeletal muscle and ovary. (B) A representative electropherogram for the wild-type 746A allele that was found in all tested tissues.

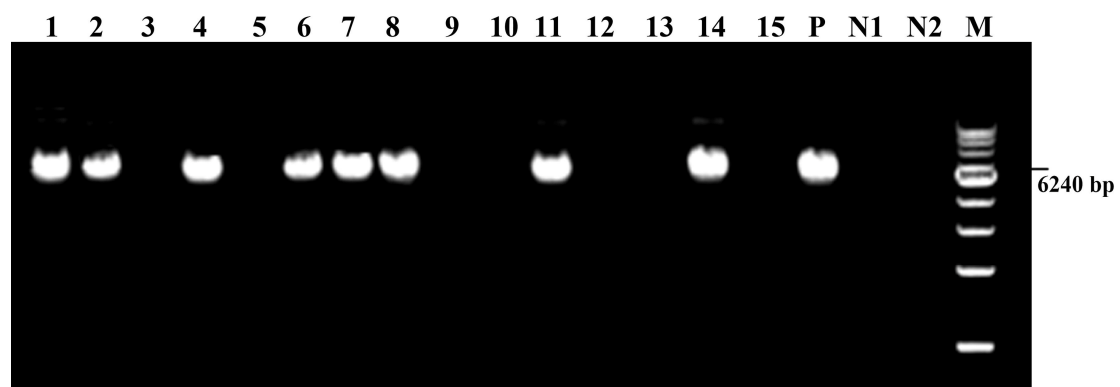


Figure S2. Long-PCR detection of a litter of F1 pigs. These pigs were produced by No. 11 boar and one wild-type Large White sows. 1, 2, 4, 6, 7, 8, 11 and 14 were transgene-positive pigs; 3, 5, 9, 10, 13 and 15 were transgene-negative ones. P, vector DNA; N1, water; N2, DNA of non-transgenic pig. M, 1 kb DNA Ladder Mark.